

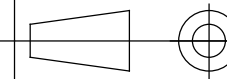


La proprietà del presente disegno e' di
DAIKIN APPLIED EUROPE S.p.A.
La riproduzione, anche se parziale, e la diffusione
senza autorizzazione sono vietate a termini di legge.
This document is reserved property of
DAIKIN APPLIED EUROPE S.p.A.
Reproduction or use for any purpose
without authorization is strictly forbidden by law.

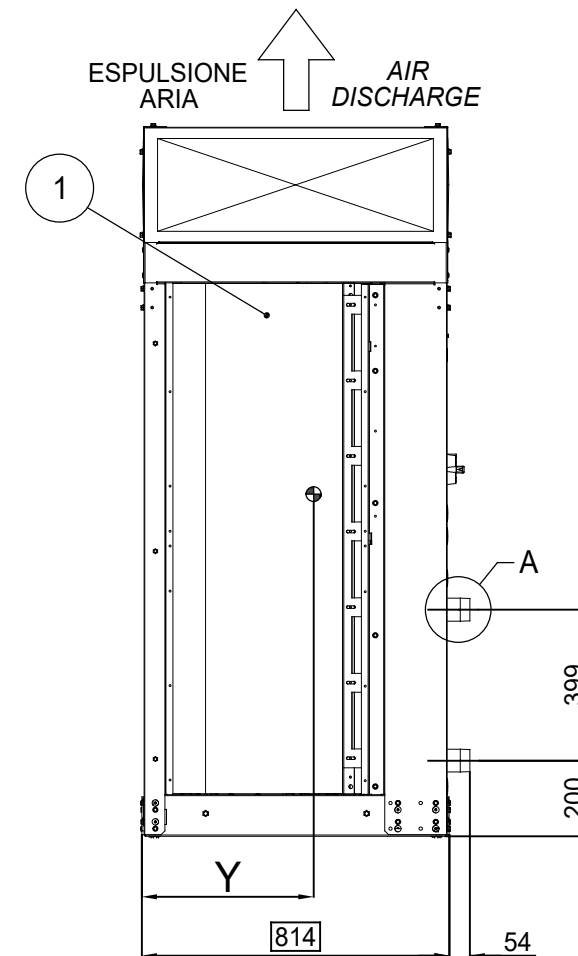
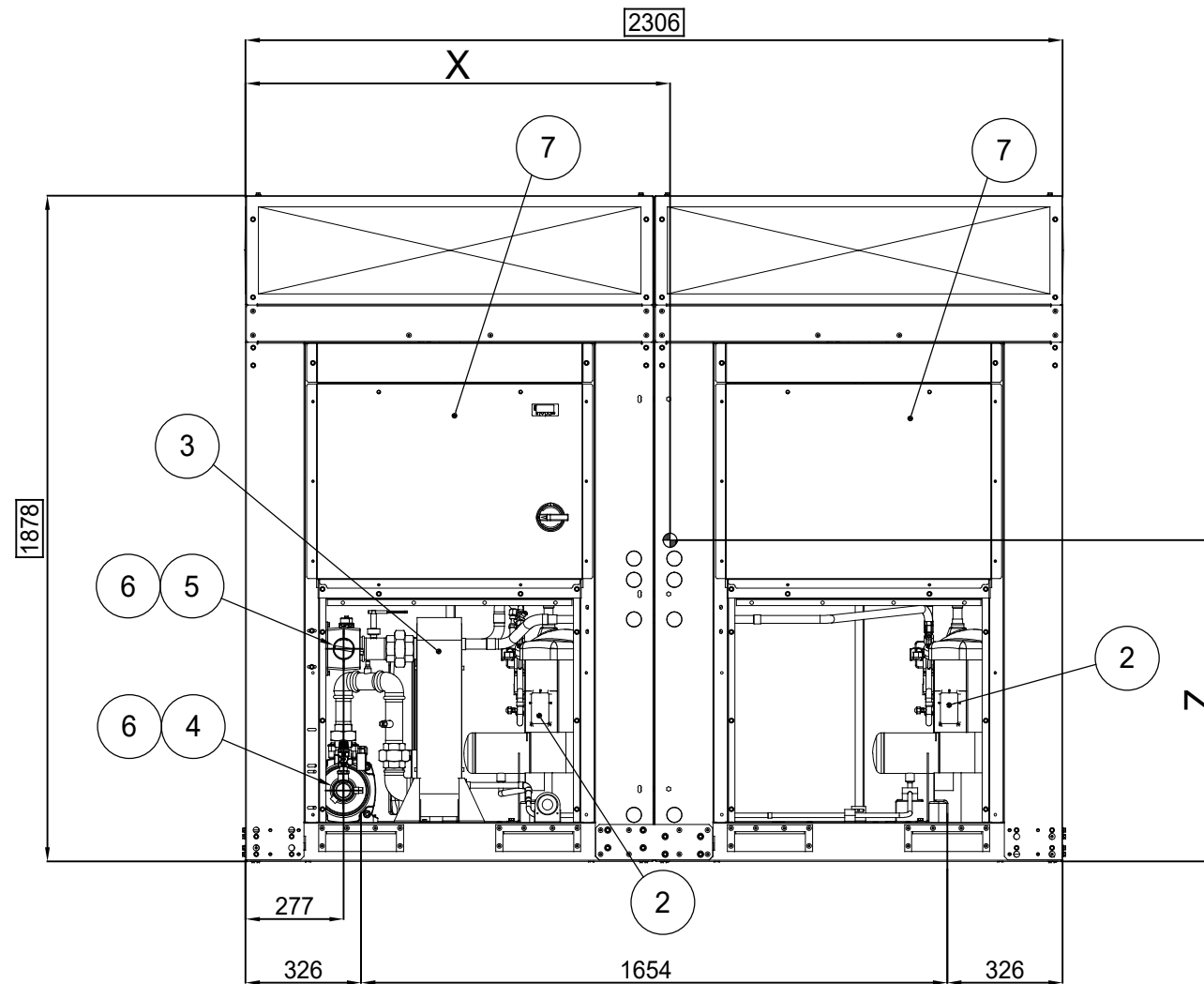
Denominazione / Identification
EWYT040÷050CZP÷H-A2

Dis./Dwg.
A.Lorenzi
Ver./Check
M.Caradonna
Appr./Passed
A.Consorti

Codice /Part. No.
EWYT040÷050CZP÷H-A2
Data/Date
28/12/2020
Foglio-Sheet
A3
Scala-Scale
1:20

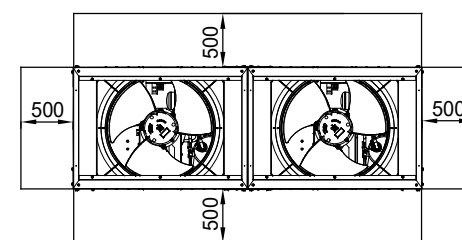
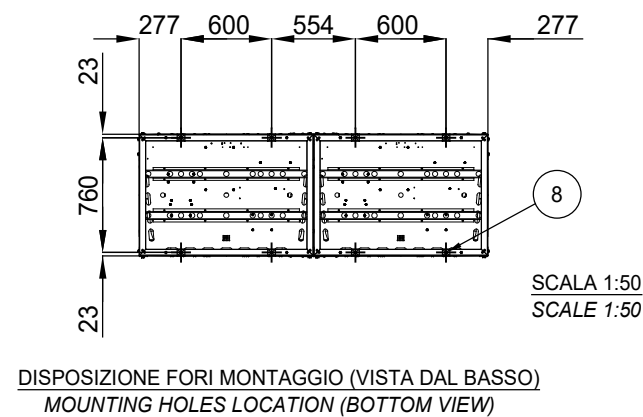


Tolleranza generale
General Tolerance ±20mm



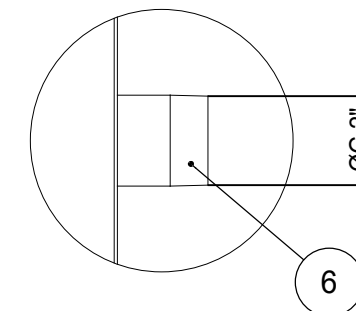
LEGENDA - LEGEND

1. BATTERIA CONDENSANTE
CONDENSER COIL
2. COMPRESSORE
COMPRESSOR
3. EVAPORATORE
EVAPORATOR
4. ENTRATA ACQUA EVAPORATORE/POMPA
EVAPORATOR/PUMP WATER INLET
5. USCITA ACQUA EVAPORATORE
EVAPORATOR WATER OUTLET
6. CONNESSIONI EVAPORATORE/POMPE 2" GAS
EVAPORATOR/PUMPS CONNECTIONS 2" GAS
7. PANNELLO DI COMANDO E CONTROLLO
OPERATING AND CONTROL PANEL
8. FORI Ø12 mm PER MONTAGGIO UNITA'
UNIT MOUNTING HOLES Ø12 mm

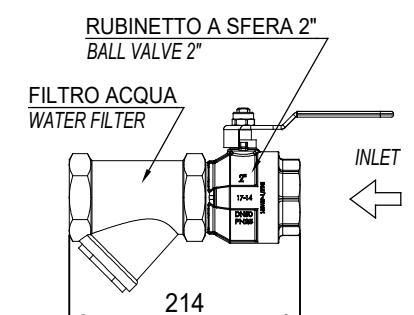
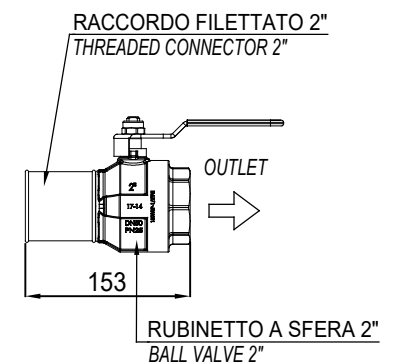


SPAZIO MINIMO NECESSARIO MANUTENZIONE
MINIMUM REQUIRED MAINTENANCE

DETTAGLIO A DETAIL A



WATER KIT - SHIPPING LOOSE



VERSIONE VERSION	TIPO CONDENSATORE CONDENSER TYPE	PESO / WEIGHT KG		BARICENTRO CENTRE OF GRAVITY		
		SPEDIZIONE SHIPPING	FUNZIONAMENTO OPERATING	X	Y	Z
EWYT040÷050CZP-A2	ALLUMINIO / ALUMINUM	546	551	1109	477	759
EWYT040÷050CZH-A2	ACRYLIC COATED					